



# B12V65A

BATTERIA AL PIOMBO 12V 65AH COBAT INCLUSO

## Specification

Nominal Voltage	12V		
Nominal Capacity(10 HR )	65.0AH		
Dimension	Length	348 3mm (13.70 inches)	
	Width	167 2mm (6.57 inches)	
	Container Height	178 2mm (7.01 inches)	
	Total Height (with Terminal)	178 2mm (7.01 inches)	
Approx Weight	Approx 19.2 kg (42.3lbs)		
Terminal	T6 / T10		
Container Material	ABS		
Rated Capacity	68.0 AH/3.40A	(20hr , 1.80V/cell,25 °C/77°F)	
	65.0AH/6.50A	(10hr, 1.80V/cell,25 °C/77°F)	
	56.0 AH/11.2A	(5hr, 1.75V/cell,25 °C/77°F)	
	48.9AH/16.3A	(3hr, 1.75V/cell,25 °C/77°F)	
	41.6 AH/41.6A	(1hr, 1.60V/cell,25°C/77°F)	
Max. Discharge Current	780A(5s)		
Internal Resistance	Approx 7.3m Ω		
Operating Temp. Range	Discharge :	-15~50°C (52 ~122°F)	
	Charge :	0 ~ 40°C (32 ~104°F)	
	Storage :	-15 ~ 40°C (5 ~ 104°F)	
Nominal Operating Temp. Range	25+/-3°C (77+/- 5° F)		
Cycle Use	Initial Charging Currentless than19.5A.Voltage		
	14.4V~15.0Vat 25°C(77°F)Temp.Coefficient-30mV/°C		
Standby Use	No limit on Initial Charging Current Voltage		
	000 13.5V~13.8Vat25 C(77 F)Temp.Coefficient-20mV/C		
Capacity affected by Temperature	40°C (104°F) 103%		
	25°C ( 77°F) 100%		
	0°C ( 32°F) 86%		
SelfDischarge	this batteries may be stored for up to 6 months		
	at 25°C (77°F) and then a freshening charge is required.		
	For higher temperatures the time interval will be s horter.		

## Constant Current Discharge(Amperes) at25°C(77°F)

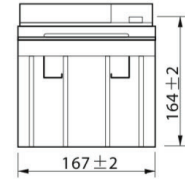
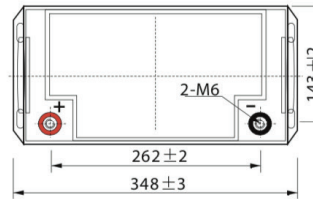
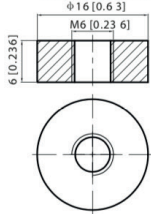
F.V/Time	5min	10min	15min	20min	30min	45min	1h	2h	3h	4h	5h	6h	8h	10h	20h
1.85V/cell	119.3	91.7	79.0	68.6	53.2	40.2	32.6	19.7	15.0	12.3	10.5	9.20	7.44	6.26	3.35
1.80V/cell	149.3	107.3	89.9	77.2	58.3	43.5	34.9	21.0	15.8	12.9	11.0	9.59	7.74	6.50	3.40
1.75V/cell	168.4	117.0	98.2	82.7	62.5	46.2	36.9	21.9	16.3	13.2	11.2	9.78	7.86	6.57	3.44
1.70V/cell	185.4	126.4	104.8	87.8	65.3	48.1	38.5	22.6	16.8	13.6	11.5	9.98	7.97	6.63	3.48
1.65V/cell	202.8	136.1	111.4	92.8	68.5	50.3	40.0	23.2	17.2	13.8	11.7	10.2	8.09	6.70	3.52
1.60V/cell	220.0	146.6	119.2	97.7	71.9	52.3	41.6	23.9	17.6	14.1	11.9	10.3	8.20	6.79	3.54

### Constant power Discharge(Watts) at25°C(77°F)

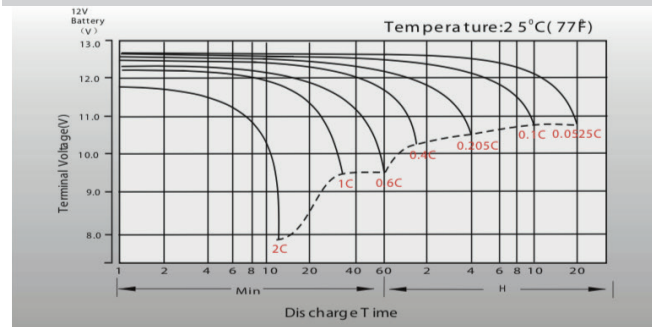
F.V/Time	5min	10min	15min	20min	30min	45min	1h	2h	3h	4h	5h	6h	8h	10h	20h
1.85V/cell	226.3	175.5	152.8	133.7	104.3	79.3	64.6	39.1	30.0	24.7	21.1	18.5	15.0	12.7	6.80
1.80V/cell	280.5	203.9	172.6	149.6	113.8	85.4	68.9	41.6	31.5	25.8	22.0	19.3	15.6	13.1	6.88
1.75V/cell	313.5	220.8	187.4	159.4	121.5	90.4	72.7	43.3	32.4	26.4	22.4	19.6	15.8	13.2	6.93
1.70V/cell	342.1	236.6	198.8	168.3	126.3	93.8	75.7	44.6	33.2	26.9	22.8	19.9	15.9	13.3	6.98
1.65V/cell	370.9	253.0	210.1	177.2	132.1	97.8	78.3	45.6	34.0	27.4	23.2	20.2	16.2	13.4	7.06
1.60V/cell	398.3	270.5	223.3	185.6	138.1	101.3	81.2	46.9	34.7	27.9	23.6	20.5	16.3	13.5	7.07

### Dimensions

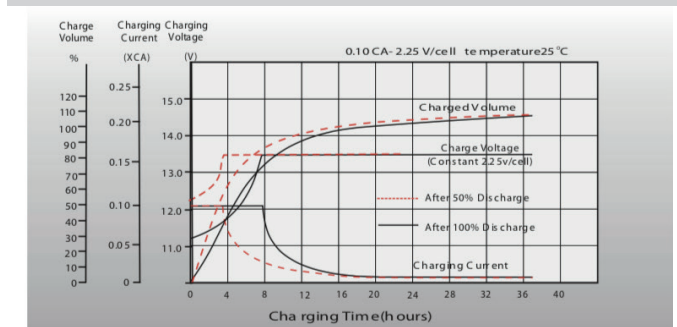
■ T6 Terminal  
Unit: mm [inches]



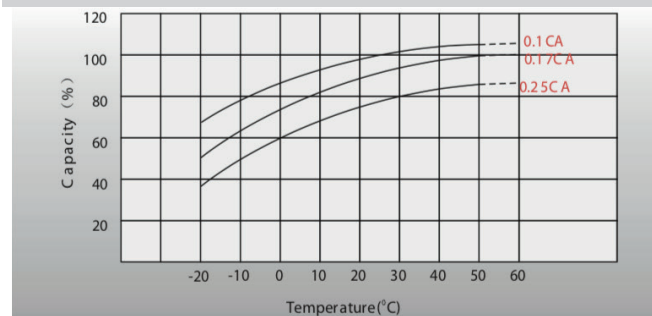
### Discharge Characteristics



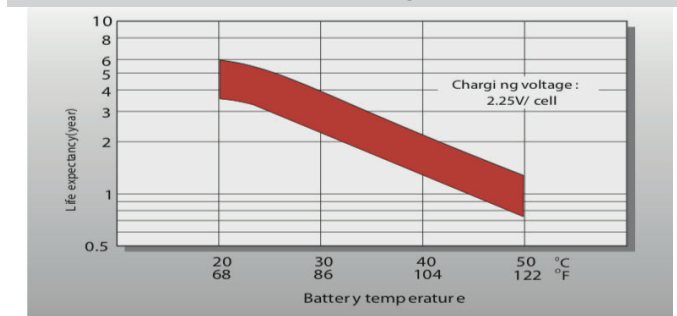
### Float Charging Characteristics



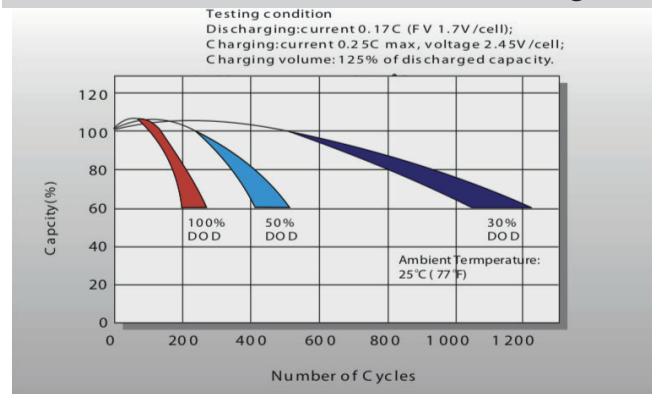
### Temperature Effects in Relation to Battery Capacity



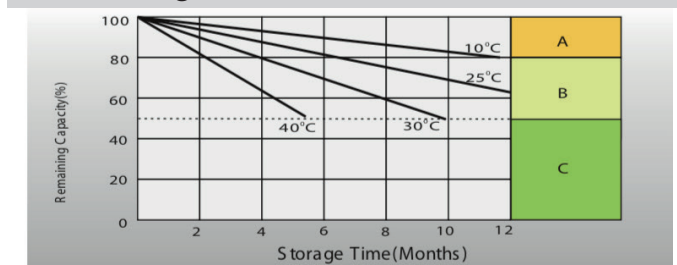
### Effect of Temperature on Long Term Float Life



### Cycle Life in Relation to Depth of Discharge



### Self Discharge Characteristics



- A** No supplementary charging required (Carry out supplementary charging before use if 100% capacity is required).
- B** Supplementary charging required before use. Optimal charging may be slow:
  1. Charged for a above 3 days at limited current 0.25CA and constant voltage 2.25V/cell.
  2. Charged for a above 20 hours at limited current 0.25CA and constant voltage 2.45V/cell.
  3. Charged for 8 ~ 10 hours at limited current 0.05 CA.
- C** Supplementary charging may often fail to recover the capacity. The battery should never be left standing until this is reached.

### Hiltron Land S.r.l.

Strada Provinciale di Caserta, 218 80144 - Napoli - Italy  
Tel: (+39) 081.185.39.000 Fax: (+39) 081.185.39.016  
[www.hiltronsecurity.net](http://www.hiltronsecurity.net)

